

Ground bond tester CXS40



- ▶ Ground continuity from 1mΩ to 1500mΩ
- ▶ From 5A to 40A AC available current
- ▶ 8 test step sequences
- ▶ 30 parameters sets storage
- ▶ Built in RS232C interface
- ▶ ETHERNET, PLC or IEEE488-2 interfaces in option

The CXS40 bonding tester is the right answer to the requirement of the VDE, UL, CSA standards and to the main EN European standards involved in the LOW VOLTAGE DIRECTIVE (LVD)*.

The CXS40 is a ground bond tester with high current dedicated as well for test laboratories as for production.

*IEC1010, IEC335, IEC950, IEC598, IEC601, IEC204, IEC558, IEC065, IEC215, IEC646, IEC730, ... standards

TECHNICAL CHARACTERISTICS

GROUND CONTINUITY FUNCTION

Measurement range

- 0.001Ω to 1.500Ω
- Display possible in voltage drop according to the EN60204 standard

Accuracy

- (2.5% + 10mΩ)
- Display : 1500 digits

Threshold

- High and Low limits adjustable from 0.001Ω to 1.500Ω
- Threshold adjustable in volt according to EN60204 standard

AC current

- 5 to 40A AC by 0.5A step, with load regulation
 - Accuracy : ± (1% + 0.5A)
 - Current can be progressively applied from 5A to the maximum test value
 - Open circuit voltage : < 12V AC sinus
 - Frequency
- Mains power supply (50 or 60Hz)

Measurement time

- Current rise time from 0 to 999sec.
- Hold time from 0 to 999 sec. or permanent

Storage

- 10 test parameters (current, threshold, time...) sets can be stored



SXSPRO software on a PC computer makes possible to perform infinite number of test steps

PROTECTIONS

Instrument

- By slow blow fuse

Ground bond tester CXS40

GENERAL CHARACTERISTICS

Presentation

- Table top unit
- Metal case

Dimensions

- Height: 131 mm
- Width : 440 mm
- Depth: 450 mm

Weight

- 24 kg

Power

- 230V or 115V \pm 15% single phase, from 47 to 63Hz

Operating temperature

- 0°C to +45°C

Storage temperature

- -10°C to +60°C

Over-voltage category

- CAT II

Pollution degree

- 2

Safety class

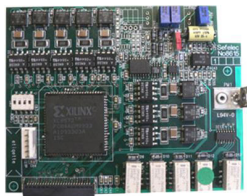
- Class I (earth connection)

OPTIONS

XS-02

PLC interface

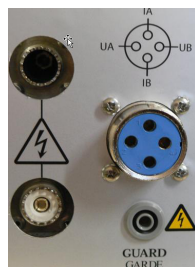
- START contact
- PASS and FAIL contacts
- FAULT contact
- END OF TEST contact



XS-05

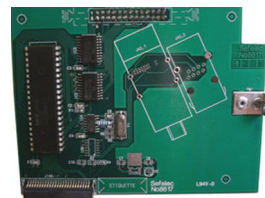
Extension to 30 memories per function instead of the 10 by default

Disconnectable rear panel outputs made on 1 JAEGER connector, and opposite JAEGER connector, to be wired (2,5 mm² cables) by the customer, is provided



XS-06

IEEE488-2 (Talker-Listener) interface



XS-19

Extension to 30 memories per function instead of the 10 by default

XS-100

Ethernet interface

Ground bond tester

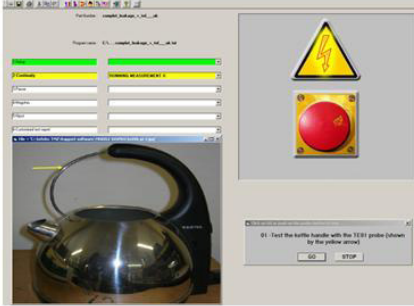
CXS40

OPTIONS

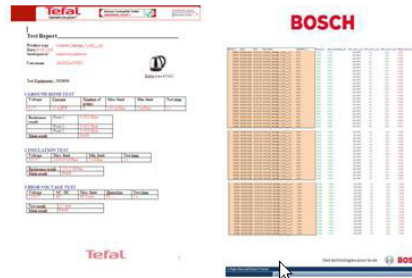
SOFTWARE

XS-96

Interactive SXSPRO software (English, French, Spanish, German) to fully control the test process (lot management, user team management, bar code reader, data base connexions (MS Access), traceability (MS Excel, MS Word), reporting (MS Word), image and sounds management for optimal communication with user)



SXS PRO screenshot with operator dialogue window example



MS Word report example

MS Excel tracability report example

OPTIONAL ACCESSORIES

TE81-XS-40-XX

2 wires probe with remote control button and green/red leds, for 40A option ref. XS-104 - XX stands for the length, to be defined at time of order (maximum length : 5 meters)



CO183-40-XX

one 2 wire cable ending with crocodile clip, for 40A option ref. XS-104 - XX stands for the length, to be defined at time of order (maximum length : 5 meters)



AO10-XS

Two user hands occupied with safety user buttons



AO11-XS

Remote control foot switch



KRXS

19 " rack mounting adaptation



Ground bond tester CXS40

CALIBRATION

XS-91-6
Ground continuity 40A calibration kit



THE SEFELEC ADVANTAGES

QUALITY

As well for test laboratories as for production lines, the XS series has one of the best specifications and accuracy on the market, in addition to the fact it can work 24 hours a day.

USER SAFETY

The XS series is the only device of this type on the market to be equipped with a double hardware safety loop, conform to the famous IEC 204 standard. It insures an optimal user safety, while manipulating an equipment that is dangerous for operator and can give death.



- Test report for XD Transformer family.
- The following tests have been proceeded: continuity test, Trip test, insulation test
- Leakage current measurement: are only made on XCD transformer series.
- Test parameters are available from general test report and test conditions in XD file.

Order number	Date	Time	Model	Operation name	Initial test	Continuity pattern %	Continuity green ok 1 / 100
989210	09/08/2010	14:20:21	SD	Transformer	FA02	FA02	0.028 Ohm
989211	09/08/2010	14:20:46	SD	Transformer	FA02	FA02	0.028 Ohm
989212	09/08/2010	14:21:01	SD	Transformer	FA02	FA02	0.028 Ohm
989213	09/08/2010	14:21:16	SD	Transformer	FA02	FA02	0.028 Ohm
989214	09/08/2010	14:21:31	SD	Transformer	FA02	FA02	0.028 Ohm
989215	09/08/2010	14:21:46	SD	Transformer	FA02	FA02	0.028 Ohm
989216	09/08/2010	14:22:01	SD	Transformer	FA02	FA02	0.028 Ohm
989217	09/08/2010	14:22:16	SD	Transformer	FA02	FA02	0.028 Ohm
989218	09/08/2010	14:22:31	SD	Transformer	FA02	FA02	0.028 Ohm
989219	09/08/2010	14:22:46	SD	Transformer	FA02	FA02	0.028 Ohm
989220	09/08/2010	14:23:01	SD	Transformer	FA02	FA02	0.028 Ohm
989221	09/08/2010	14:23:16	SD	Transformer	FA02	FA02	0.028 Ohm
989222	09/08/2010	14:23:31	SD	Transformer	FA02	FA02	0.028 Ohm
989223	09/08/2010	14:23:46	SD	Transformer	FA02	FA02	0.028 Ohm
989224	09/08/2010	14:24:01	SD	Transformer	FA02	FA02	0.028 Ohm

TEST GUARANTEE & CALIBRATION

This is essential to start a day of production being sure your tester can detect good/bad D.U.T. properly. Our range of dummy boxes (ref. SD series) is made for this: they will simulate you can indeed detect good or bad products.

Calibration is recommended once a year and with our calibration boxes range (ref. XS-91 series), it becomes easy and there is no need anymore to send the unit back for calibration: you save money (shipment, calibration cost), time (travel time, calibration time, you choose the optimal period for the calibration so it does not affect your production process), + you limit the risk of damages during transportation.