

# Oil Convection Cooled Attenuators



- Self cooling design
- Broadband operation
- Rugged construction
- Fully shielded against production of extraneous radiation
- Other Attenuation values available upon request

**Coolant Method** Oil, Convection Cooled  
**Impedance** 50 Ohm  
**Operating Position** Horizontal Only

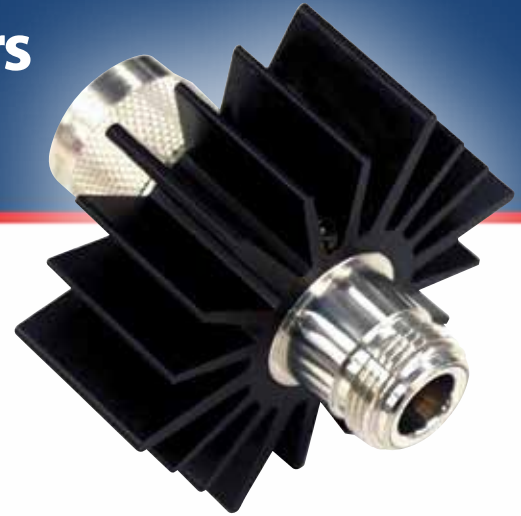
**Ambient Temperature** -40°C to 45°C  
**Humidity** 95% non-condensing  
**Standard Attenuation Value** 30 dB

	Power Rating	Connector	VSWR & Frequency Range	Cooling Method	Dimensions (LxWxH)	Weight
8325	500 W	QC - N(f) Input; QC - N(f) Output	DC to 500 MHz at 1.1:1 max	Convection	17.5" x 6.0" x 8.5" 445mm x 151mm x 216mm	25 lbs. 11.0 kg
8327-300	1000 W	QC - LC(f) Input; QC - N(f) Output			24.0" x 7.2" x 17.2" 596mm x 181mm x 437mm	57 lbs. 26.0 kg
8329-300	2000W	QC - LC(f) Input; QC - N(f) Output			24.0" x 7.2" x 17.2" 596mm x 181mm x 437mm	
8329-300 w/ BA-300-115	4000 W	QC - LC(f) Input; QC - N(f) Output		Forced Convection, 115 VAC Fan	23.5" x 7.2" x 22.1" 596mm x 181mm x 560mm	70.5 lbs. 32 kg
8329-300 w/ BA-300-230	4000 W			Forced Convection, 230 VAC Fan		

## OPTIONAL ACCESSORIES

- Interlock Thermoswitch . . . . . 2450-056 (8327 Models only)  
 Interlock Thermoswitch . . . . . 8329-028 (8329 Models only)

# Convection Cooled Attenuators



- Self cooling design, needs no cooling plate
- Frequencies up to 18 GHz
- Fully shielded against production of extraneous radiation
- Attenuator requires no AC power
- Rugged construction
- Broadband operation
- Other attenuation values available upon request
- Models to cover all LTE frequencies

<b>Coolant Method</b>	Dry, Convection Cooled
<b>Impedance</b>	50 Ohm
<b>Operating Position</b>	Any
<b>Ambient Temperature</b>	-40°C to 40°C
<b>PIM</b>	-110 dBc Min.

<b>AC Power</b>	None**
<b>Humidity</b>	95% non-condensing
<b>Standard Attenuation Values</b>	3, 6, 10, 20, 30 dB

	Power Rating	Connector	VSWR & Frequency Range	Dimensions (LxWxH)	Weight	Finish
<b>2-A</b>	2 W	BNC, N	1.10:1 from DC to 1 GHz 1.25:1 from 1 to 4 GHz	2.4" x 0.8" Dia. 61 x 21 Dia. mm	3.1 oz. 88 g	Tri-Alloy
<b>2-A</b>	2 W	SMA	1.15:1 from DC to 2.5 GHz 1.30:1 from 2.5 to 6 GHz	0.9" x 0.4" Dia. 23 x 11 Dia. mm	1.2 oz. 34 g	Stainless Steel
<b>2-6A</b>	2 W	N	1.25:1 from DC to 6 GHz	1.8" x 0.9" Dia. 46 x 23 Dia. mm	2.5 oz. 71 g	
<b>2-18A</b>	2 W	SMA, N	1.15:1 from DC to 4 GHz 1.20:1 from 4 to 8 GHz 1.25:1 from 8 to 12.4 GHz 1.35:1 from 12.44 to 18 GHz	1.8" x 0.9" Dia. 46 x 23 Dia. mm	2.5 oz. 71 g	
<b>3-A</b>	3 W	BNC, TNC	1.10:1 from DC to 1 GHz 1.25:1 from 1 to 4 GHz	1.5" x 0.6" Dia. 39 x 16 Dia. mm	3.1 oz. 88 g	Tri-Alloy
<b>5-A</b>	5 W	BNC, N, TNC	1.10:1 from DC to 1 GHz 1.25:1 from 1 to 4 GHz	2.6" x 0.8" Dia. 67 x 21 Dia. mm	3.1 oz. 88 g	Stainless Steel
<b>5-6A</b>	5 W	N	1.25:1 from DC to 6 GHz	2.4" x 0.9" Dia. 61 x 23 Dia. mm	3.0 oz. 86 g	
<b>5-18A</b>	5 W	SMA, N	1.15:1 from DC to 4 GHz 1.25:1 from 4 to 12.4 GHz 1.35:1 from 12.4 to 18 GHz	2.5" x 0.9" Dia. 64 x 23 Dia. mm	3.5 oz. 100 g	
<b>10-A</b>	10 W	SMA, BNC, N, TNC	1.10:1 from DC to 1 GHz 1.25:1 from 1 to 4 GHz	2.8" x 2.3" Dia. 72 x 59 Dia. mm	5.0 oz. 142 g	Black Anodized Aluminum
<b>10-6A</b>	10 W	SMA, N	1.20:1 from DC to 4 GHz 1.30:1 from 4 to 6 GHz	2.5" x 1.1" Dia. 64 x 28 Dia. mm	3.5 oz. 100 g	Stainless Steel
<b>10-18A</b>	10 W	N	1.20:1 from DC to 4 GHz 1.30:1 from 4 to 12.4 GHz 1.45:1 from 12.4 to 18 GHz	2.5" x 0.9" Dia. 64 x 23 Dia. mm	3.5 oz. 100 g	
<b>25-A</b>	25 W	SMA, BNC, 7/16 DIN, N, TNC	1.10:1 from DC to 1 GHz 1.25:1 from 1 to 4 GHz	5.3" x 2.3" Dia. 135 x 59 Dia. mm	9.0 oz. 256 g	
<b>25-6A</b>	25 W	N	1.20:1 from DC to 6 GHz	4.2" x 2.3" x 2.3" 107 x 59 x 59 mm	13.5 oz. 383 g	Stainless Steel
<b>25-18A</b>	25 W	N	1.20:1 from DC to 4 GHz 1.30:1 from 4 to 12.4 GHz 1.40:1 from 12.4 to 18 GHz	4.2" x 2.3" x 2.3" 107 x 59 x 59 mm	13.5 oz. 383 g	

\*\*1500 W models require 115/230V AC power

# Convection Cooled Attenuators



## CONVECTION COOLED ATTENUATOR PART NUMBER DEFINITION

POWER RATING (WATTS)	PRODUCT TYPE	CONNECTOR GENDER	CONNECTORS*	ATTENUATION VALUE (in dB)
See chart below for models	A, SA, WA – Attenuator	M/F – Male/Female F/F – Female/ Female	A - SMA B - BNC N - N T - TNC E - IEC 7/16	03 – 3 dB 06 – 6 dB 10 – 10 dB 20 – 20 dB 30 – 30 dB

\*Call for custom connector options not shown in this catalog

Power Rating	Connector	VSWR & Frequency Range	Dimensions (LxWxH)	Weight	Finish
<b>50-A</b>	50 W SMA, BNC, 7/16 DIN, N, TNC	1.10:1 from DC to 1 GHz 1.25:1 from 1 to 3 GHz	6.4" x 2.3" Dia. 163 x 59 Dia. mm	1.0 lbs. 454 g	Black Anodized Aluminum
<b>50-6A</b>	50 W N	1.20:1 from DC to 6 GHz	4.7" x 3.0" x 3.0" 120 x 77 x 77 mm	1.7 lbs. 772 g	Stainless Steel
<b>50-18A</b>	50 W N	1.25:1 from DC to 6 GHz 1.35:1 from 6 to 12.4 GHz 1.45:1 from 12.4 to 18 GHz	4.7" x 3.0" x 3.0" 120 x 77 x 77 mm	1.7 lbs. 772 g	Stainless Steel
<b>75-A</b>	75 W SMA, BNC, 7/16 DIN, N, TNC	1.10:1 from DC to 1 GHz 1.25:1 from 1 to 3.0 GHz	7.3" x 2.3" Dia. 186 x 59 Dia. mm	1.6 lbs. 726 g	Black Anodized Aluminum
<b>100-A</b>	100 W SMA, BNC, 7/16 DIN, N, TNC	1.10:1 from DC to 1 GHz 1.25:1 from 1 to 3 GHz	7.3" x 2.6" x 6.4" 186 x 67 x 163 mm	3.6 lbs.	Black Anodized Aluminum
<b>100-6A</b>	100 W N	1.20:1 from DC to 2 GHz 1.35:1 from 2 to 4 GHz 1.40:1 from 4 to 6 GHz	6.4" x 2.7" x 3.8" 163 x 69 x 97 mm	2.4 lbs. 1.7 kg	Stainless Steel
<b>100-SA</b>	100 W BNC, 7/16 DIN, N, TNC	1.10:1 from DC to 1 GHz 1.25:1 from 1 to 2.4 GHz	8.4" x 2.8" x 2.8" 214 x 72 x 72 mm	3.0 lbs. 1.4 kg	Black Anodized Aluminum
<b>150-A</b>	150 W BNC, 7/16 DIN, N, TNC	1.10:1 from DC to 1 GHz 1.25:1 from 1 to 3 GHz	6.7" x 2.6" x 11.9" 171 x 67 x 303 mm	6.6 lbs. 3.0 kg	
<b>150-SA</b>	150 W SMA, BNC, 7/16 DIN, N	1.10:1 from DC to 1 GHz 1.25:1 from 1 to 2.4 GHz	9.1" x 4.0" x 5.0" 232 x 102 x 127 mm	5.5 lbs. 2.5 kg	
<b>150-WA</b>	150 W BNC, 7/16 DIN, N, TNC	1.10:1 from DC to 1 GHz 1.25:1 from 1 to 2.4 GHz	5.6" x 5.4" x 4.3" 143 x 138 x 110 mm	2.5 lbs. 1.2 kg	
<b>300-A</b>	300 W BNC, 7/16 DIN, N, TNC	1.10:1 from DC to 1 GHz 1.25:1 from 1 to 2.4 GHz	7.3" x 5.4" x 10.9" 186 x 138 x 277 mm	12.0 lbs. 5.5 kg	
<b>300-WA</b>	300 W BNC, 7/16 DIN, N, TNC	1.10:1 from DC to 1 GHz 1.25:1 from 1 to 2.4 GHz	9.0" x 5.4" x 4.8" 229 x 138 x 122 mm	4.6 lbs. 2.1 kg	
<b>500-WA</b>	500 W 7/16 DIN, N	1.10:1 from DC to 1 GHz 1.25:1 from 1 to 2.4 GHz	12.4" x 5.4" x 4.8" 315 x 138 x 122 mm	7.9 lbs. 3.6 kg	
<b>600-A</b>	600 W 7/16 DIN, N	1.10:1 from DC to 1 GHz 1.25:1 from 1 to 2.4 GHz	12.7" x 9.4" x 9.6" 323 x 239 x 244 mm	21.5 lbs. 9.8 kg	
<b>1000-A*</b>	1000 W 7/16 DIN, N	1.10:1 from DC to 1 GHz 1.25:1 from 1 to 2.4 GHz	13.6" x 12.8" x 9.6" 346 x 326 x 244 mm	26.5 lbs. 12.0 kg	
<b>1000-WA*</b>	1000 W 7/16 DIN, N	1.10:1 from DC to 1 GHz 1.25:1 from 1 to 2.4 GHz	19.6" x 10.6" x 4.8" 498 x 270 x 122 mm	26.5 lbs. 12.0 kg	
<b>1500-WA*</b>	1500 W 7/16 DIN, N	1.10:1 from DC to 1 GHz 1.25:1 from 1 to 2.4 GHz	20.4" x 10.7" x 5.9" 519 x 272 x 150 mm	30.0 lbs. 13.6 kg	

\*Note: attenuators 1000 W and above are not available in attenuation values less than 10 dB